



Gathorne Street, London, , E2 0PW

£2,850 PCM

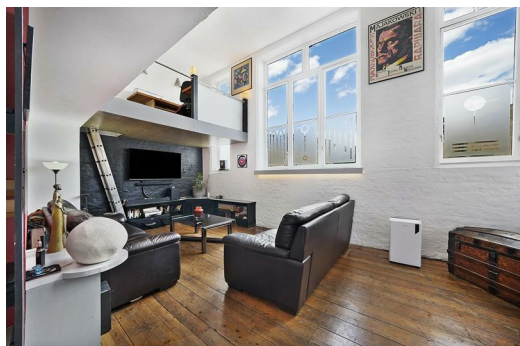
Elms Estates are absolutely delighted to be able to bring to the market To Let this striking Two Double Bedroom Duplex Apartment set within a beautifully converted Victorian school.

Located within a secure gated development and offering over 1,000 sq ft of bright, character-rich living space. The property features soaring double-height ceilings, original wooden flooring, exposed brickwork, and classic casement windows that flood the home with natural light. The first floor of the apartment comprises a large, versatile reception room, a generous double bedroom, and a modern three-piece bathroom.

Upstairs, the mezzanine level houses a fully fitted kitchen and dining area with amazing views of the canal, a dedicated office space ideal for working from home, and a second spacious double bedroom. Residents also enjoy access to a communal rooftop garden with views across East London.

Positioned between both Bethnal Green and Mile End stations (serving the Central, District, and Hammersmith & City lines), the property benefits from excellent transport links into the City and Canary Wharf. The green open spaces of Victoria Park, Regent's Canal, and Mile End Park are all just a short walk away, with vibrant local cafes, restaurants, and amenities close by.

Bow Brook House is available from 7 February 2026



Reception
21'11" x 12'5" (6.7 x 3.8)

Kitchen/Dining Area
22'7" x 10'2" (6.9 x 3.1)

Bedroom One
12'9" x 11'5" (3.9 x 3.5)

Bedroom Two
13'1" x 9'6" (4.0 x 2.9)

Bathroom

Communal Roof Terrace

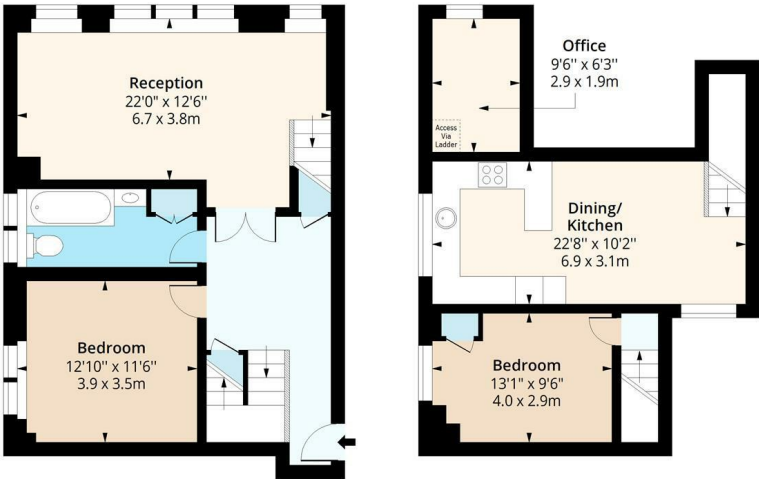
Material Information

Deposit: £3,288.46
Length Of Tenancy: One Year
Council Tax Band: D



Bow Brook House, E2

Approx. Gross Internal Area 1143 Sq Ft - 106.18 Sq M



First Floor
Floor Area 678 Sq Ft - 62.99 Sq M

Mezzanine
Floor Area 465 Sq Ft - 43.20 Sq M



Measured according to RICS IPMS2. Floor plan is for illustrative purposes only and is not to scale. Every attempt has been made to ensure the accuracy of the floor plan shown, however all measurements, fixtures, fittings and data shown are an approximate interpretation for illustrative purposes only. 1 sq m = 10.76 sq feet.

lpaplus.com

Date: 24/6/2025

